

Floor / Ceiling

Models

- AB*A12LBTH**
- AB*A14LBTH**
- AB*A18LBTH**
- AB*A24LBTH**



The slim and lightweight design allow the unit to be suspended from the ceiling or installed on the floor. This type suits many room designs

Flexible installation

Example for floor installation

Floor console



Example for ceiling installation

Under ceiling



Specifications

Model name			AB*A12LBTH	AB*A14LBTH	AB*A18LBTH	AB*A24LBTH
Power source			230V ~, 50Hz			
Capacity	Cooling	kW	3.6	4.5	5.6	7.1
	Heating		4.0	5.0	6.3	8.0
Input power		W	30	42	74	99
Airflow rate	High	m ³ /h	660	780	1,000	1,000
	Med		570	640	720	820
	Low		490	550	580	680
Sound pressure level	High	dB(A)	36	40	46	47
	Med		32	36	39	42
	Low		28	34	35	37
Dimensions (H x W x D)		mm	199 x 990 x 655			
Weight		kg	25	27		
Connection pipe diameter	Liquid (Flare)	mm	ø6.35		ø9.52	
	Gas (Flare)		ø12.70		ø15.88	
	Drain		ø25 (I.D.) ; ø32 (O.D.)			

AB*: ABY(FUJITSU), ABH(GENERAL)

Note : Specifications are based on the following conditions.

Cooling : Indoor temperature of 27°CDB / 19°CWB, and outdoor temperature of 35°CDB / 24°CWB.

Heating : Indoor temperature of 20°CDB / (15°CWB), and outdoor temperature of 7°CDB / 6°CWB.

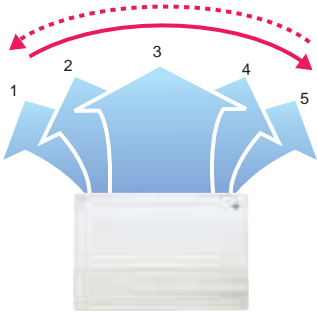
Pipe length : 7.5 m; Height difference between outdoor unit and indoor unit : 0 m.

Voltage : 230 [V].

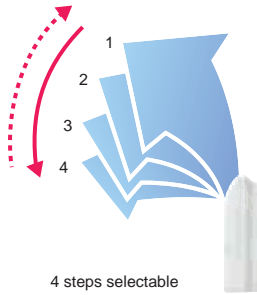
Double auto swing

A combination of up/down and right/left directional swing allows three-dimensional air direction control.

RIGHT and LEFT SWING



UP and DOWN SWING



Super vane

Double Louvre Super vane with newly developed special configuration boosts airflow sending cool air quickly to every corner of the room.

Auto-closing louvre

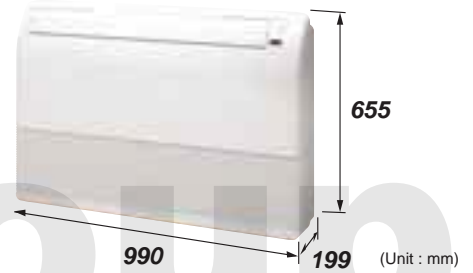
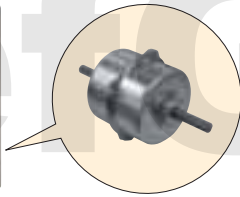
When operation is stopped, the louvres will automatically close. (This function is available on all non-ducted models.)

Compact design

Symmetrical, slim and compact design.

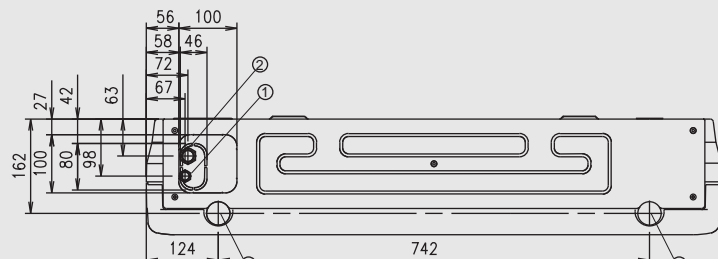
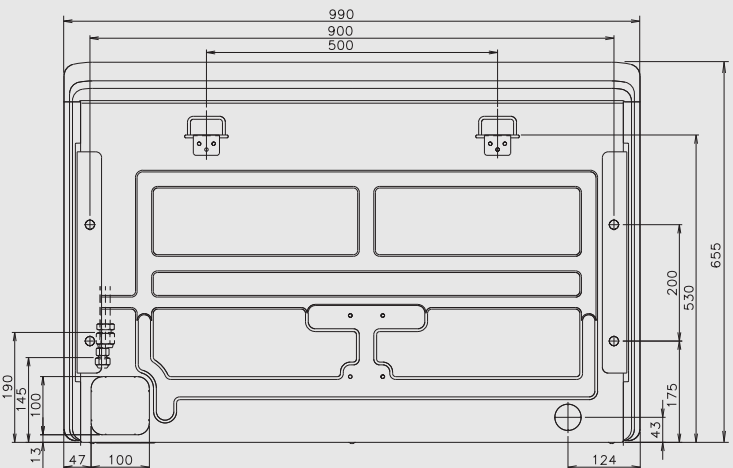
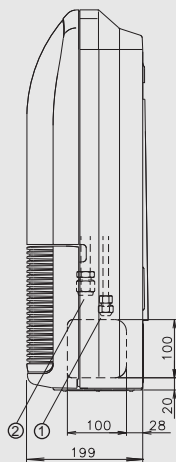
High power DC fan motor

- High power
- Wide rotation range
- High efficiency



Dimensions (Unit: mm)

Models: AB*A12 / AB*A14 / AB*A18 / AB*A24



- ① Refrigerant piping flare connection (Liquid)
- ② Refrigerant piping flare connection (Gas)
- ③ Drain piping connection