

Low Static Pressure Duct / Duct

Models [Low Static Pressure Duct]

- ARXB24LATH**
- ARXB30LATH**
- ARXB36LATH**
- ARXB45LATH**



Indoor units suitable for quiet rooms such as a hotel or a bedroom

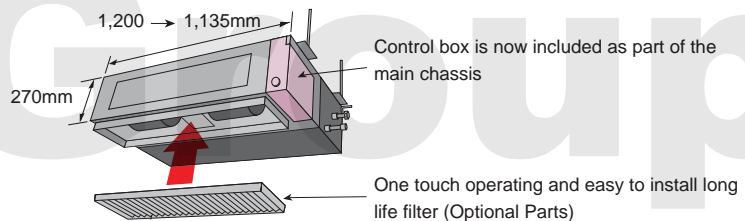
Models [Duct]

- ARXA24LATH**
- ARXA30LATH**
- ARXA36LATH**
- ARXA45LATH**

Slim Compact design allows for easy installation in narrow ceiling spaces up to 270mm

Slim & Compact design

In the case of bottom return air connection, not only does the indoor unit design allow for installation in a narrow ceiling space of up to 270mm, Further space savings have been achieved by mounting the electrical control box internally inside the chassis.



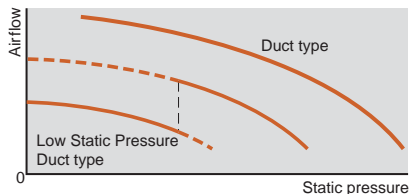
Specifications

Model name			ARXB24LATH	ARXB30LATH	ARXB36LATH	ARXB45LATH	ARXA24LATH	ARXA30LATH	ARXA36LATH	ARXA45LATH
Power source			230V ~, 50Hz				230V ~, 50Hz			
Capacity	Cooling	kW	7.1	9.0	11.2	12.5	7.1	9.0	11.2	12.5
	Heating		8.0	10.0	12.5	14.0	8.0	10.0	12.5	14.0
Input power		W	145	198	253	338	190	188	312	312
Airflow rate	High	m ³ /h	1,100	1,410	1,710	1,970	1,280	1,280	1,720	1,720
	Med		920	1,280	1,600	1,790	1,210	1,210	1,670	1,670
	Low		810	1,150	1,470	1,670	1,130	1,130	1,600	1,600
Static pressure range		Pa	0 to 80	0 to 80	0 to 80	0 to 80	30 to 150	30 to 150	30 to 150	30 to 150
Standard static pressure			40	50	50	60	100	100	100	100
Sound pressure level	High	dB(A)	31	34	37	41	38	40	43	43
	Med		27	32	35	38	36	38	41	41
	Low		25	29	33	36	34	36	39	39
Dimensions (H x W x D)		mm	270 x 1,135 x 700				270 x 1,135 x 700			
Weight		kg	43	45			43	45		
Connection pipe diameter	Liquid (Flare)	mm	ø9.52				ø9.52			
	Gas (Flare)		ø15.88		ø19.05		ø15.88		ø19.05	
	Drain		ø25 (I.D.) ; ø32 (O.D.)				ø25 (I.D.) ; ø32 (O.D.)			

Note : Specifications are based on the following conditions.

Cooling : Indoor temperature of 27°CDB / 19°CWB, and outdoor temperature of 35°CDB / 24°CWB.
 Heating : Indoor temperature of 20°CDB / (15°CWB), and outdoor temperature of 7°CDB / 6°CWB.
 Pipe length : 7.5 m; Height difference between outdoor unit and indoor unit : 0 m.

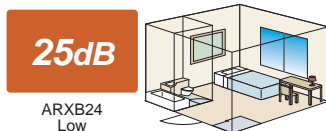
Line-up of low-noise and high-power models, compatible with a wide range of static pressure



Low Static Pressure Duct type

Optimum model for hotels or bedrooms

An ultra low-noise model that achieves a quiet interior. Perfect for hotels or bedrooms with limited air duct installation space. Two different levels can be selected according to the static pressure range.



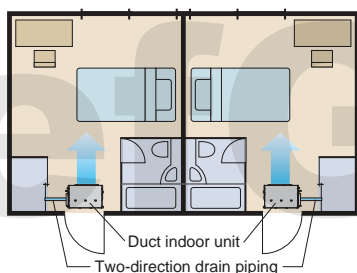
Duct type

Powerful model with a flexible design

With a powerful motor, appropriate for a wide range of static pressure. Flexible air duct installation is possible in a large space such as an office.



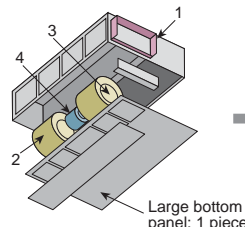
Two-direction drain piping



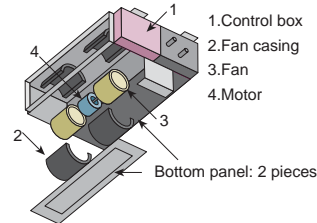
Easy maintenance

See below for the case of rear suction type

Previous model



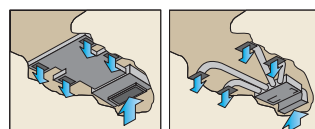
New model



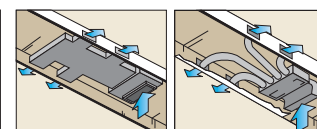
Structural improvement is attained by making the bottom panel two pieces, front and rear. The internal fan casing is also manufactured in two pieces, namely upper and lower. The maintenance of the motor and fan can be easily carried out by removing the rear panel and the lower part of the casing while leaving the main chassis installed.

Installation styles

Embedded in Ceiling



Hanging from Ceiling



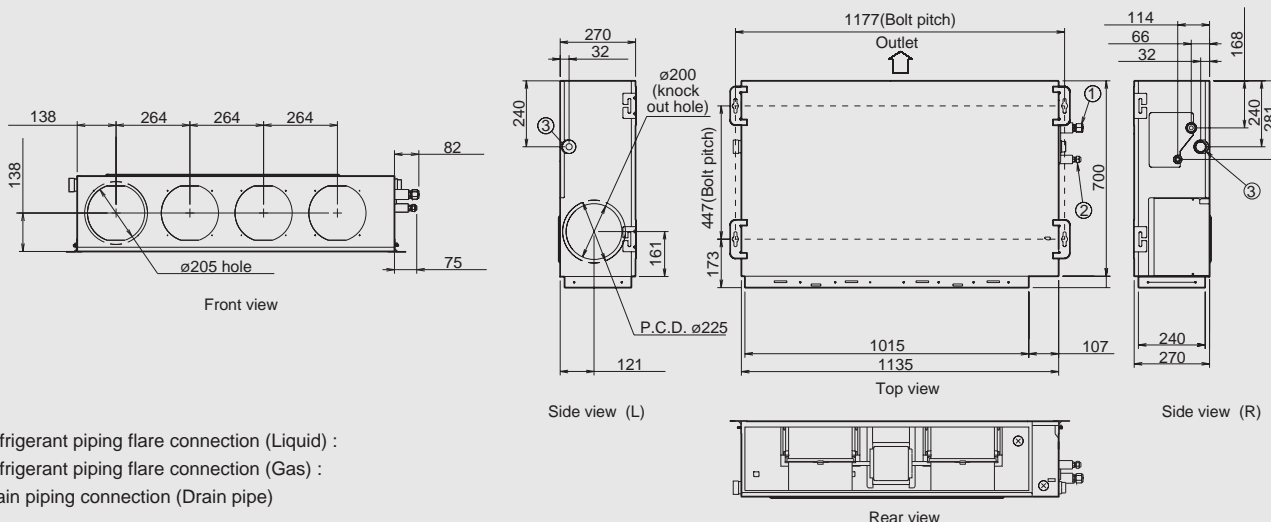
Optional parts

Remote Sensor Unit : UTD-RS100	Flange (Round) : UTD-RF204
Long Life Filter : UTD-LF25NA	IR Receiver Unit : UTB-*WB
Flange (Square) : UTD-SF045T	Drain Pump Unit : UTZ-PX1NBA
*WB : YWB, TWB	

Dimensions (Unit : mm)

Models: ARXB24 / ARXB30 / ARXB36 / ARXB45
ARXA24 / ARXA30 / ARXA36 / ARXA45

*Service accessibility must be allowed for when installing the product.
Please consult the installation manual for the necessary service access size.



- ① Refrigerant piping flare connection (Liquid) :
- ② Refrigerant piping flare connection (Gas) :
- ③ Drain piping connection (Drain pipe)